



Notice of A413 Great Missenden street lighting works

January 2021 | www.hs2.org.uk

High Speed Two (HS2) is the new high speed railway for Britain. We are continually reviewing the works on our construction sites in line with Government and Public Health England (PHE) advice on dealing with COVID-19. The Government's current strategy makes it clear that construction activity can continue as long as it complies with this guidance. Please be assured that only sites that can operate within the guidelines are operational. All sites will remain under constant review.

We have postponed all face-to-face engagement events and meetings and have put in place a number of channels to communicate with communities, such as letters and phone calls, as well as updates and alerts from each of the local community websites. You can sign up for regular updates in your local area at www.hs2inbucksandox.co.uk

Why are we doing these works?

As part of the final Link Road / A413 improvement works, we need to replace the old street lights and posts around the Link Road / A413 approach. The seven upgraded street lights will be to the latest LED specification which are more energy efficient and create less light pollution. We also have some final completion works to undertake at the entrance to the Buryfield carpark and the HS2 haul / access road.

Some final landscape planting verge wildflower seeding is also due to take place in the highway verge. This seeding will be a wildflower mix that will complement the surrounding area.

If you have a question about HS2 or our works, please contact our HS2 Helpdesk team on 08081 434 434 or email hs2enquiries@hs2.org.uk

Duration of works

A413 works will start 8 February 2021 and last for approx. 3 weeks.

Haul Road completion works will take a further 2 weeks to mid-March.

What to expect

Some local traffic disruption including the use of temporary traffic lights and narrow lanes at times.

Installation of new A413 Link Road lamp posts.

What we will do

Manage the works so as to minimise disturbance.

Notice of A413 Great Missenden street lighting works

Notification



www.hs2.org.uk

What we will be doing?

- Install digital verge messaging signage advising motorists of these works
- Establishing a small temporary site compound on the existing haul road hard standing
- Street lighting upgrade
- Final completion works for Buryfield and haul road entrance
- Planting wildflower seed

Site compound

To enable us to carry out these works, we will need to establish a small compound on the Haul Road where the welfare facilities were situated previously. The route is directly off the A413 using the existing haul road as access. To undertake these works we will use mobile welfare facilities parked within this compound. Once established the compound will include:

- Office and welfare facilities alongside storage of machinery and materials
- Car parking with temporary low level lighting

Phase one (8 February – 12 February 2021)

Approaching the A413 Link Road roundabout from Wendover we need to replace the street lights in the highway verge. To undertake this safely we need to install three way traffic light control. These traffic lights will be local to the Link Road roundabout and allow us to close a lane on the A413. Details of this temporary traffic light layout is shown overleaf.

Works are being undertaken off peak to minimise disruption.

The work will involve the excavation of a new cable trench and the foundations of the new lamp posts. The new lamp posts will then be installed and switched on. We will then reinstate the grass verge and seed.

Phase one traffic management

The traffic management and temporary traffic lights will be set up each day at 09.30 am and will be removed by 3.00pm. This will take place over a period of one week. Working outside of peak hours will minimise the disturbance to commuters and local traffic.

Contact our HS2 Helpdesk team on **08081 434 434**

Notice of A413 Great Missenden street lighting works

Notification



www.hs2.org.uk

Phase two (15 February – 19 February 2021)

We need to undertake final completion works to the HS2 haul / access road from the A413. To undertake this safely we need to narrow the A413 lanes approaching the Link Road roundabout. This will involve localised traffic management with narrow lanes. No A413 traffic lights are required for this phase of works.

The haul / access road works will involve some additional works to the traffic island and the erection of an additional overhead safety barrier. Additionally, during this phase we are undertaking the final works to the Buryfield entrance from Link Road. This will again be completed outside of peak hours and school times. This work will consist of the installation of bollards, handrails and fencing. To provide a safe working area we are putting in place temporary three way traffic lights with priority for Link Road traffic. During this phase we will also undertake Frith Hill verge grass seeding.

Phase two traffic management

A413 and Frith Hill narrow lane traffic management will be used. Temporary traffic lights will also be set up each day at the Buryfield / Link Road entrance.

All traffic management will be installed from 09.30 am and will be removed by 3.00pm. This will take place over a period of one week.

Phase three (22 February – 26 February 2021)

We need to install and remove lamp posts on the Wendover side of the A413 / Link Road roundabout. This will involve localised A413 traffic management with narrow lanes. No traffic lights are required for this phase of works although traffic management will be in place full time for this phase. The work will involve the excavation of the foundations of the new lamp posts. The new lamp posts will then be installed and switched on. We will then remove the old lamp posts in this area and reinstate the grass verge and seed.

Phase three traffic management

A413 narrow lane traffic management will be used. The traffic management will be installed on 22 February at 8.00am and will be removed no later than 6.00pm on the 26 February.

Phase four (1 March – 12 March 2021)

No traffic management is required for this phase of works. The work in this phase is our final completion works of grounds maintenance and Fusion demobilisation from the site.

Contact our HS2 Helpdesk team on **08081 434 434**

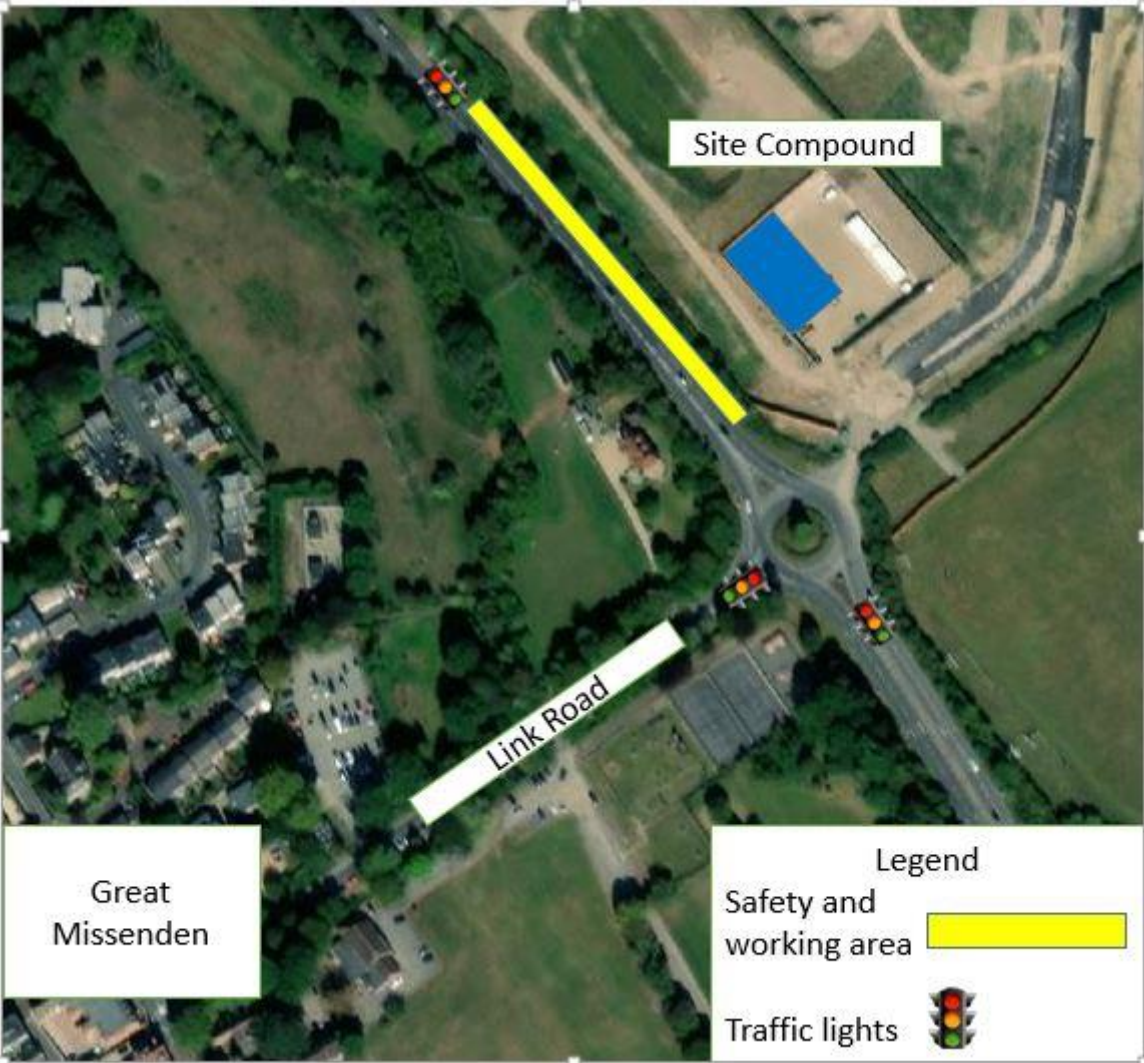
Notice of A413 Great Missenden street lighting works

Notification



www.hs2.org.uk

Temporary traffic lights map of phase one



What else is happening in your area?

www.hs2.org.uk

Contact our new HS2 Helpdesk team

Our new Helpdesk team is based in our Head Office in Birmingham. This is so that we can provide you with the best service possible. Our team is here to listen and respond to your enquiry, complaint or feedback to help us be a good neighbour.

You can contact our Helpdesk team all day, every day of the year on:

Freephone: **08081 434 434**

Minicom: **08081 456 472**

Email: hs2enquiries@hs2.org.uk

Keep up-to-date with your local community website

To find out more about what's happening in your area and receive regular email updates, you can sign up to our local community websites at: www.hs2inyourarea.co.uk.

About our Community and Business Funds

We are offering two funds that are available to local communities and businesses between the West Midlands and London, to help with the disruption caused by our construction work. These are the Community and Environment Fund (CEF) and the Business and Local Economy Fund (BLEF).

The CEF is designed to give communities the opportunity to share in the benefits of HS2. It is an allocated fund that communities are able to apply for, to help to support local projects that aim to improve their local area.

The BLEF is designed to support local economies that may be disrupted by the construction of HS2. BLEF grants are for local business support organisations and local authorities to help maintain business activity in local communities.

For more information about each of these funds, including how to apply, please visit: <https://www.groundwork.org.uk/hs2funds>



Keeping you informed

We are committed to keeping you informed about work on HS2. This includes ensuring you know what to expect and when to expect it, as well as how we can help.

Residents' Charter and Commissioner

The Residents' Charter is our promise to communicate as clearly as we possibly can with people who live along or near the HS2 route. www.gov.uk/government/publications/hs2-residents-charter

We also have an independent Residents' Commissioner whose job is to make sure we keep to the promises we make in the Charter and to keep it under constant review. Find reports at: www.gov.uk/government/collections/hs2-ltd-residents-commissioner

You can contact the Commissioner at: residentscommissioner@hs2.org.uk

Construction Commissioner

The Construction Commissioner's role is to mediate and monitor the way in which HS2 Ltd manages and responds to construction complaints. You can contact the Construction Commissioner by emailing: complaints@hs2-cc.org.uk

Property and compensation

You can find out all about HS2 and properties along the line of route by visiting: www.gov.uk/government/collections/hs2-property
Find out if you're eligible for compensation at: www.gov.uk/claim-compensation-if-affected-by-hs2

Holding us to account

If you are unhappy for any reason you can make a complaint by contacting our HS2 Helpdesk team. For more details on our complaints process, please visit our website: www.hs2.org.uk/how-to-complain

Contact Us

Contact our HS2 Helpdesk team all day, every day of the year on:

 Freephone **08081 434 434**

 Minicom **08081 456 472**

 Email **hs2enquiries@hs2.org.uk**

Write to:

FREEPOST

HS2 Community Engagement

Website **www.hs2.org.uk**

To keep up to date with what is happening in your local area, visit: **www.hs2inyourarea.co.uk**

Please contact us if you'd like a free copy of this document in large print, Braille, audio or easy read. You can also contact us for help and information in a different language.

HS2 Ltd is committed to protecting personal information. If you wish to know more about how we use your personal information please see our Privacy Notice <https://www.gov.uk/government/publications/high-speed-two-ltd-privacy-notice>

Reference number: FUS_AWN_0166 HS2-EW-Fusion -Ph1-Ar-Ce-C2-Prog-works-1-21/01/2021

High Speed Two (HS2) Limited, registered in England and Wales.
Registered office: Two Snowhill, Snow Hill Queensway, Birmingham B4 6GA.
Company registration number: 06791686. VAT registration number: 888 8512 56.